

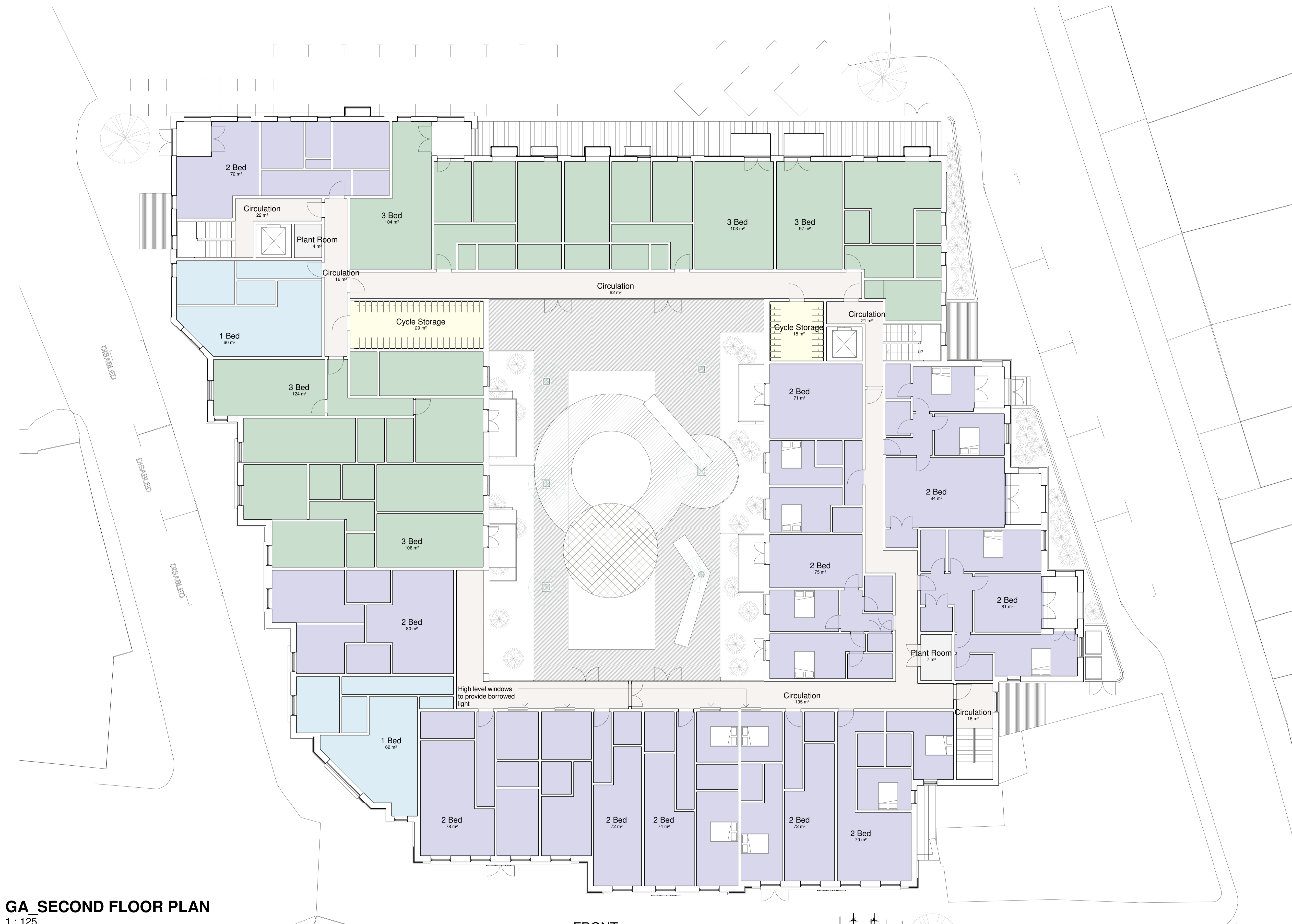
Accommodation Schedule

1 Bedroom	2
2 Bedroom	11
3 Bedroom	5
Second Floor Total	18
Cycles	60

- 1 Bed
- 2 Bed
- 3 Bed
- Circulation
- Cycle Storage
- Plant Room

1 Bed: 1p - min 39 m²; 2p - min 50 m²
 2 Bed: 3p - min 61 m²; 4 p - min 70 m²
 3 Bed: 4p - min 74 m²; 5p - min 86 m²

(Technical housing standards – nationally described space standard, 2015)



GA SECOND FLOOR PLAN

1 : 125

FRONT

notes: 1. Apartment layouts to be revised.

revisions:	T	26/03/19	LP	Planning; second floor layout amended - total number of flats reduced to 48
	S	13/03/19	LP	First and second floor plans amended
	R	13/12/18	LP	Planning
	Q	25/07/18	LP	Amendments following planning comments
	P	15/02/18	LP	Planning
	O	24/01/18	SL	Accommodation Schedule amended
	N	01/12/17	SL	Plans and elevations revised
	M	09/11/17	SL	Layout revised
	L	07/11/17	SL	GF, FF, SF plans revised
	K	15/09/17	SL	Residential layout amended; South and North elevations revised

Knightspur Homes Limited
Cornhill Walk
 Bury St Edmunds

drawing information

title: **PROPOSED SF PLAN**

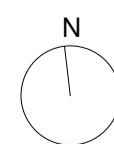
status:
 date:
 scale:
 drawn:
 chkd:

Planning
 12/10/16
 1 : 125
 LP
 SL

job: **5378** dwg: **1202** rev: **T**



PWP Architects Ltd 61 South Street, Havant, Hampshire PO9 1BZ
 t: 02392 482494 f: 02392 481152
 e: design@pwp-architects.com
 w: www.pwp-architects.com



NOTE: The contractor is responsible for checking all site dimensions and levels. These should be checked prior to the ordering of any components and before the commencement of the works. All discrepancies should be brought to the attention of the Contract Administrator.

26/03/2019 17:18:11